

### BOARD OF DIRECTORS

President: Brian Troyer, *at-large*  
 Vice-president: Ken Gasper, *NorthStar Cooperative*  
 Secretary: Dr. Miriam Weber Nielsen, *MSU Dept. of Animal Science*

Randy BeVier, *at-large*  
 Nancy Blaauw, *at-large*  
 Sheila Burkhardt, *at-large*  
 Lauren Siver, *at-large*  
 Jeff Bushey, *at-large*  
 Chuck Courtade, *Dairy Farmers of America*  
 Tom Davis, *at-large*  
 John Dilland, *at-large*  
 Dr. Mark Fox, *at-large*  
 Eric Frahm, *Michigan Milk Producers Association*  
 Velmar Green, *Michigan Milk Producers Association*  
 Bryan Hull, *Dairy Farmers of America*  
 Dana Sue Kirk, *at-large*  
 Dwight Nash, *Dairy Farmers of America*  
 Gary Nelsen, *at-large*  
 Tom Nugent, *at-large*  
 Dr. John Partridge, *MSU Dept. of Food Science and Human Nutrition*  
 Carl Rasch, *Michigan Milk Producers Association*  
 Remus Rigg, *at-large*  
 Gene Sickels, *at-large*  
 John Stout, *at-large*  
 Bridgette Voisinnet, *NorthStar Cooperative*  
 Jason Wadaga, *Michigan Dairy Foods Association*  
 Matt Wood, *Vita Plus*

### Students attend MDMSF Annual Meeting



Michigan State University (MSU) students and recipients of 2016-17 Michigan Dairy Memorial and Scholarship Foundation (MDMSF) scholarships attended the 2017 MDMSF annual meeting to express appreciation to the MDMSF board for their scholarship awards. Pictured (standing) left to right are: Ethan Haywood, Evelyn Okkema, Kelly Raterink, Jared Sanderson, Stephanie Weil, Austin Haywood, Hailey Sharrard, Jorin Ouwinga, and Shelby Berens. Pictured seated left to right are: Ellen Launstein, Allison Schafer, Leta Larsen, Madeline Meyer, Marin Western, Alycia Burch, and Natalie Horning. Missing from the photo is Emma Blough.

### THE MICHIGAN DAIRY MEMORIAL SCHOLARSHIP FUND: AT A GLANCE

Thanks to the generous support of donors, the Michigan Dairy Memorial and Scholarship Foundation (MDMSF) at Michigan State University (MSU) is proud to highlight an impressive list of scholarships made possible in 2016-2017:

- \$1,500 for fall semester to five freshmen in Ag Tech or 4-year program
- \$2,000 for fall semester to five Ag Tech Students
- \$3,500 over two semesters to 10 students in a 4-year program
- **Glenn and Anne Lake Scholarship** – \$7,500 over two semesters
- **Russel Erickson Scholarship** – \$5,000 over two semesters
- **John and Barbara Dilland Scholarship** – \$4,000 over two semesters for a student majoring in Agribusiness Management
- **Redmond and Edna Cotter Purina Memorial Scholarship** – \$4,000 for a student in veterinary school with preference extended to those with international interest
- **Jack and Betty Barnes International Scholarship** – scholarships for international experiences
- **Archie Studer Scholarship** – \$4,000 over two semesters for a student with interest in dairy breeding or production
- **Donald and Valera Murray Scholarship** – \$4,000 over two semesters
- **Velmar Green Scholarship** – \$4,000 over two semesters for a second-year student in the Ag Tech Dairy Management Program
- **Harold and Lillian Gremel Scholarship** – \$4,000 over two semesters for a student in veterinary school
- **Nick Bellows Scholarship** – \$4,000 over two semesters for a student with interest in dairy promotion



## **PRESIDENT'S MESSAGE**

The Michigan Dairy Memorial Scholarship Foundation was established to help students in the dairy science (production) and dairy foods programs at MSU be able to better afford the cost of tuition. As someone who benefited from this program during my college years, I am forever grateful that it existed to help me. As we look to the future and hear of the continued increase in tuition and other costs, the need to continue this worthy program is as important as ever.

Even though the production side of our industry in Michigan has faced a couple of tough economic years, we need to remain diligent about training the next generation of dairy industry participants. This includes producers, processors, allied industry personnel, and well-trained workers to staff these enterprises.

One thing that doesn't change is the positive attitude of the young people who are involved in the dairy programs at MSU. It is encouraging to see the enthusiasm and caliber of the students applying for and receiving these scholarships each year. And we need to celebrate the achievements of these individuals, be it in academics, dairy judging, or other worthwhile learning experiences.

The Michigan Dairy Memorial Scholarship Foundation funds its scholarships through a program recognizing those who have contributed to the Michigan dairy industry during their careers. These gifts are placed in a fund that is invested appropriately, and the proceeds are used for scholarships and to support other undergraduate educational activities. A donation of \$1,000 provides recognition as an Foundation Honoree.

Please join us by supporting the next generation of our Michigan dairy industry.

Brian Troyer  
MDMSF President

## **MAKE A CONTRIBUTION TO MDMSF**

*When the occasion suggests flowers, consider a living, growing tribute.*

## **MICHIGAN DAIRY MEMORIAL AND SCHOLARSHIP FOUNDATION**

Where the earnings provide scholarships to worthy  
students in dairy industry-related fields.

Make checks payable to: Michigan State University  
Designate: Michigan Dairy Memorial and Scholarship  
Foundation (A10901)

### **MAIL TO:**

Dr. Miriam Weber Nielsen  
Department of Animal Science  
Michigan State University  
2265 Anthony Hall, 474 S. Shaw Lane  
East Lansing, MI 48824-1225



# 2016-2017 DAIRY MEMORIAL HONOREES



## AL THELEN

The Michigan Dairy Memorial and Scholarship Foundation (MDMSF) at Michigan State University (MSU) is honoring the late Al Thelen for his many decades of contributions to the dairy industry through his involvement in developing one of the nation's first computer systems for recording dairy production records.

Thelen was born on the family homestead south of Fowler, the tenth of 12 children. He and his wife Marie raised six children on their 100-acre Clinton County farm south of St. Johns.

Thelen graduated from the Agriculture Shortcourse Program at Michigan State College (MSC) in 1949. Upon graduation, he accepted a job as a Dairy Herd Improvement Association (DHIA) technician in Eaton County. From there, he was drafted by the U.S. Army and served two years as the Chaplain's Assistant in Fort Riley, Kansas, during the Korean War. After the war, Thelen took a position with Michigan State's Dairy Extension Department, and was subsequently approached by what was then the MSC Dairy Department to begin developing the first version of today's DHIA data processing system. Prior to that point, all records were manually calculated in the field by DHIA technicians. Under Thelen's leadership and direction, computerization of milk recordkeeping systems became a reality. Thelen dedicated nearly 50 years of service to the MSC Dairy Department, eventually known as the MSU Department of Animal Science, and was Michigan DHIA General Manager until his retirement in July, 1997.

Thelen was recognized by National DHIA, receiving the first ever Martin A. Wilson Memorial Award in 1989 and by the MSU College of Agriculture and Natural Resources as its Distinguished Service to Agriculture Award winner in 2000.

In addition to his lifelong commitment to a career in the Michigan dairy industry and improving milk production record tracking systems, Thelen continued farming and volunteered with multiple organizations, including the MSU Credit Union, the Knights of Columbus, 4-H, and the MSU President's Club. He became a member of the Knights of Columbus in 1948, and served in a variety of roles including editor of the Michigan Columbian Newspaper. Thelen also was devoted to the Michigan State Grange working diligently to expand its positive impact on society. Thelen served on numerous state boards and foundations, including National DHIA, the American Dairy Science Association, and the Michigan Association of Farmer Cooperatives. Last, but certainly not least, Thelen was known for his passion for MSU Hockey. As avid fans and supporters, his family held season tickets for a number of years.



## JOHN PARTRIDGE

In honor of John Partridge's 37 years of service to the Michigan State Dairy Industry, the Michigan Dairy and Memorial Scholarship Foundation recognizes John as a 2017 Foundation Honoree.

Dr. Partridge started his dairy career in high school at Elmwood Dairy in Newport, Vermont which was owned and operated by his grandparents and two uncles. After he earned his B.S. in Animal Science with emphasis in Dairy Technology from the University of Vermont (UVM) in 1975, he returned home as assistant manager. After three years, Dr. Partridge returned to UVM as a research technician and finished an M.S. in Animal Science with a Dairy Technology specialization in 1980 followed by his Ph.D. in Food Science from Michigan State University in 1983. In addition to serving joint appointments in two departments, John held appointments in teaching, research and extension during the course of his career, and was responsible for the management of the MSU Dairy Foods Complex for 36 years. Over the course of his time here, he made significant advancements in the areas of Undergraduate Education, Outreach to the Dairy Foods Industry, and the Michigan State Dairy Processing Plant.

During his career, Dr. Partridge taught courses in Unit Operations, Dairy Foods Processing, Fruits and Vegetable Processing, Food Plant Management and a variety of other subjects. His deep knowledge of the dairy processing industry and his desire to help students thrive in their academic areas is what fueled his success as a professor and an academic advisor.

Dr. Partridge was recognized locally for his excellence in teaching with the Outstanding Extension Specialist Award of the Michigan Association of Extension Specialists, the Outstanding Extension Specialist Award by the Extension Specialist association of MSU, the Honorary American FFA Degree by National FFA, and the MSU Alpha Zeta Distinguished Teaching Award. Nationally, he was recognized as the recipient of the ADSA Kraft General Foods Teaching Award by the American Dairy Science Association. Partridge was also awarded the Industry Service Award from the Michigan Dairy Industry Conference and the Lifetime Achievement Award from the Allied Ice Cream and

## **2016-2017 DAIRY MEMORIAL HONOREES, CONTINUED**

### **JOHN PARTRIDGE (CONTINUED)**

Dairy Foods Association of Michigan. From the University of Vermont, he received the 2017 Outstanding Alumni Award from the College of Agriculture and Life Sciences.

He served as the Food Science B.S. Program Advisor, Superintendent of the FFA Ag Skills Milk Quality Contest, and Dairy Products Evaluation Team coach. His 37 years of dedication to the Dairy Products Evaluation Team did not end with his retirement, as he still serves as a co-coach to the team. His time and dedication to this team serves as a testament to his commitment to students and to the dairy industry.

Congratulations to Dr. John Partridge on his 37 years of service. The dairy industry is grateful for his tremendous dedication to its advancement and is proud to recognize him as an Honoree of the Michigan Dairy Memorial and Scholarship Foundation.



### **FRANCIS AND WILMA TRIERWEILER**

Francis and Wilma Trierweiler started what is now known today as TDI Farms in Westphalia, Michigan back in 1955 when they were married. They are being recognized by the Michigan Dairy Memorial and Scholarship Foundation for their dedication and love of God, family, farm and community.

Francis was born in 1930 on what is now a sixth generation operating dairy farm. Wilma also was born and raised on her own family farm in Pewamo, Michigan in 1934. Although not being able to attend high school because he was needed at home on the farm, Francis did attend for two years Michigan State College, as it was known as in the early 1950s. Francis started farming on his own shortly before marrying and not long after was called to naval duty for two years in Maryland. Being newly married, they both moved to another state many miles from home and sent what little money they had back home to help the farm survive in their absence.

The couple had five children – Frank, Janet, Julie, Robert (deceased) and Paul. They also have two wonderful daughter in laws and one son in law – Terri, Tracie and Frank (Freund).

Francis and Wilma have been active members of St Mary's Catholic Church in Westphalia as well as countless boards, committees and Catholic societies. Wilma has always been a perfect example of humility, grace and Christianity. She was a mother always there for her children, neighbors or friends evident by her willingness to serve on the Christian Mothers Society and Daughters of Isabella as well as countless other volunteer positions in the community.

Francis is known for his dedication of talents, hard work, work ethic and “can do” attitude which has served his family and community in many different ways. While getting the farm going again after his return from naval duty, Francis took on much work to provide for his young family, including two winters at General Motors, selling MoorMans feed and Northrup King seeds. He also ran a custom chopping business with his brother early on to help with reducing equipment costs on his way to achieving his dairy farm plans.

Francis received soil conservationist of the year in 1976, and other activities included Pewamo-Westphalia school board, Westphalia Township Supervisor, Westphalia Township Assessor, Clinton County Road Commissioner, and Knights of Columbus 4th degree. On top of these accomplishments he also sold John Deere farm equipment for 16 years, which he enjoyed servicing at other farms and forming lifelong friendships with many trusted fellow farmers.

Francis and Wilma were innovative and early adopters of technology as it became available. One example is while most farms were putting in storage for ear corn in the 1960s, they invested in a grain drying bin which was one of only a handful in the region at the time.

As of today, Francis and Wilma have 14 grandchildren and 6 great grandchildren (with one on the way). Directly employed at the farm are seven family members with many others pitching in when needed. Through their perseverance and tireless giving of time, talent and guidance the specialized dairy farm they started with the purchase of 40 heifers back in 1957 has grown incrementally to 1600 cows and cropping more than 3200 acres.

Francis and Wilma have been blessed with much but have always given back to others. This is a guiding principle in their lives and they are shining examples of God, Country, Family and Community!

# DAIRY MEMORIAL RECIPIENTS

## Dairy Memorial Scholarships (\$3,500)

---

**ALYCIA BURCH**, daughter of Rodney and Shelly Burch, of Jeddo, is a senior pursuing a degree in animal science with a minor in agribusiness management. She expects to graduate in May 2018 and plans to become a dairy cattle nutritionist. Burch is currently working at Lamb Dairy Farm in Jeddo and the Michigan State University (MSU) Dairy Teaching and Research Center, where she monitors cows and calves, processes calves through administering vaccinations, and assists with milking. She is an active member of the MSU Block & Bridle Club, MSU Dairy Club, and Sigma Alpha Sorority.

**ALYSSA GEHRING** graduated in May with a degree in agribusiness management. She is the daughter of Bill and Lenai Gehring, of Harbor Beach, where she works at Rock Falls Farm as a farm laborer. As an undergraduate, she was active in the MSU Dairy Club and served as their social officer, the MSU Block and Bridle Club where she served as their Marshal Officer and Spring Beef Expo Chair, and the MSU College of Agriculture and Natural Resources Student Senate, where she served as the Vice President of Communications. Gehring was active in her local 4-H club and FFA chapter for many years. She plans to work for Farm Bureau, MSU Extension, or return to her family's dairy, beef, and cash crop farm.

**NATALIE HORNING** graduated in May 2017 with a degree in Agriculture, Food, and Natural Resources Education. She is the daughter of Jeff and Lynda Horning, of Manchester. Over the past two summers, Horning interned with the MSU Extension Children and Youth Institute and the Young Farmer and Promotion & Education division of Michigan Farm Bureau. She has also worked as a Student Supervisor for MSU Culinary Services and a farmhand at Horning Farms. Horning was involved with the MSU Dairy Club, MSU Collegiate Farm Bureau, and the MSU Dairy Cattle Judging Team, served as a Michigan Senior Dairy Ambassador, and was an active member of her 4-H club. Horning plans to obtain a teaching certificate and become an agriscience teacher and FFA advisor.

**SUZANNA HULL**, daughter of Michael and Lori Hull of North Adams, is a senior at MSU pursuing a degree in animal science with a minor in agribusiness management. She expects to graduate in May 2018 and plans to pursue a career in dairy nutrition research. Hull served as a representative for the Michigan Junior Holstein Association, 4-H Council, and Hillsdale County Dairy Leaders Committee. At MSU, she is a member of the Dairy Club, has served on the Spartan Spectacular Calf Sale committee, was a teaching assistant for the Introductory Dairy Cattle Management course, and participated on the MSU Dairy Cattle Judging Team that earned a trip to Europe.

**TOREI KULPINSKI**, of Coldwater, is an MSU senior and the daughter of Michael and Tara Kulpinski. She majored in animal science with a concentration in the Production Animal Scholars program, and plans to become a dairy cattle veterinarian. Kulpinski has worked as a farm hand at Kulpinski Dairy Farms, and is currently an employee at Kulpinski Calf Raising

Operation, interning at Pridgeon Swine Farm in Montgomery, and working as an undergraduate assistant in Dr. Adam Lock's Dairy Nutrition Lab. She is involved in the MSU Block & Bridle Club and served as the Treasurer for the MSU Dairy Club.

**JARED SANDERSON**, son of Mike and Pattie Sanderson, is an animal science junior pursuing a concentration in the Production Animal Scholars program. He is currently an undergraduate research assistant in Dr. Mike VandeHaar's Nutrition Laboratory. Sanderson has also been employed by Purina Animal Nutrition and worked at Welter Dairy Farm in Crosswell and Weaverland Dairy in Sandusky. He is the Vice President of the MSU Dairy Club, serves as the treasurer of the MSU Block & Bridle Club, participated in the MSU and Midwest Regional Dairy Challenge events, and was a member of MSU Tower Guard. Upon graduation, Sanderson plans to attend the MSU College of Veterinary Medicine or graduate school.

**JACK LUOMA**, of East Leroy, is the son of James Luoma and Lori Laing. He is an animal science senior. Luoma works as a veterinary assistant and receptionist at Southside Vet Clinic, and as an assistant herdsman for Donacres Dairy Farm, and is interning with Beadle Lake Large Animal Clinic and Halbert's Dairy Farm. After graduating in May 2018, he would like to attend the MSU College of Veterinary Medicine, focusing on dairy and large animal production. Luoma then plans to work at his father's veterinary practice and eventually start his own practice. He is active in the CANR Student Senate, MSU Dairy Club, and Collegiate Farm Bureau.

**JORIN OUWINGA**, son of Robert and Darline Ouwinga, graduated in May with a degree in agribusiness management. He has previously worked as a herdsman for LewMax Holsteins in Belding, and as a student manager at Cal Poly Dairy Farm in San Luis Obispo, Calif. Ouwinga was a member of the Alpha Gamma Rho Fraternity and participated on the MSU Dairy Cattle Judging Team. Since graduation, he accepted a position as a Livestock Production Specialist with Purina Animal Nutrition in central lower Michigan.

**EMILY PEACOCK**, studied Animal Science and graduated in May 2017. She is the daughter of Michael and Mary Peacock of Morley, Mich. Last summer, she was a research intern for Phibro Animal Health. During school, she worked as a student research assistant for Dr. Richard Pursley and for the Aquatic Animal Health Laboratory. Peacock was involved in the Sigma Alpha Professional Agriculture Sorority and MSU Dairy Club, and participated on the MSU National Dairy Challenge Team. She was recently hired as a Member Representative for Michigan Milk Producers Association.

## Dairy Memorial Scholarships (\$3,500) (continued)

---

**ELLEN LAUNSTEIN**, of Mason, is the daughter of Dan and Laura Launstein. She is currently an animal science senior and expects to graduate in May 2018. Launstein has previously worked as a Starbucks barista and an employee at Launstein Dairy in Leslie, and she currently works as a research assistant for Quality Milk Alliance at MSU and an electrical lab teaching assistant in the MSU Department of Biosystems and Agricultural Engineering. She is active in the MSU Dairy Club and the MSU Dairy Challenge. After graduation, Launstein plans to attend veterinary school to become a production animal veterinarian.

**HAILEY SHARRARD**, of Peck, is the daughter of Joe and Amy Sharrard. She is currently an animal science senior, and expects to graduate in May 2018. Sharrard previously worked on her family's dairy farm, for the MSU Animal Science Molecular Reproductive Endocrinology Laboratory, and as an MSU Extension student assistant. She is currently employed as an undergraduate research assistant in the Animal Science Lipid Research Laboratory, and recently completed an internship with ABS Global, Inc. in DeForest, Wis. Sharrard has served as secretary and vice-president of the MSU Dairy Club, and plans to attend vet school to become a large animal veterinarian.

## Freshman Scholarships (\$1,500)

---

**LETA LARSEN** of Scottville, is an agribusiness management major sophomore, with a minor in agronomy. She is the daughter of Burke and Lisa Larsen, and is looking forward to returning to her family's dairy farm after graduating in 2020. Larsen plans on managing her family's farm with her sisters. She eventually wants to open a milk processing plant to bottle their farm's milk, in addition to producing ice cream and cheese to sell locally. Larsen previously worked as the assistant manager and dairy calf manager at Larsen Farms, and as sweet corn stand manager at Larsen Girls' Sweet Corn. Larsen is currently a student assistant for Career Services in the MSU Stadium, and is involved with the MSU Dairy Club and the National Agri-Marketing Association.

**ALLISON SCHAFER**, daughter of Leroy and Stephanie Schafer, of Westphalia, is an agribusiness management sophomore. She is currently employed at Tractor Supply Company and her family's dairy farm JEM-LOT Dairy. Schafer is involved with the MSU Dairy Club and Collegiate Farm Bureau. After graduating in 2020, she plans to pursue a career path in the agricultural and dairy industry.

**AUSTIN HAYWOOD**, son of Luke and Renee Haywood, is an animal science sophomore. Hailing from Hastings, he plans to return to work on and eventually manage and operate his family's dairy farm, Sand Creek Dairy. Haywood currently is involved with both the animal and cropping systems on the farm, working with Jersey and Holstein cows, raising alfalfa and corn, and the dairy's cheese production. He has been very involved in 4-H, and currently serves as the Barry County Dairy Teen Superintendent, and with FFA, where he serves as the 2016-17 Michigan FFA State Secretary. Haywood is also a member of the MSU Dairy and MSU Block and Bridle clubs.

**MADELINE MEYER**, daughter of James and Veronica Meyer, of Ionia, is an animal science sophomore. When not on campus, she is a farm hand at Bos Greenhouses in Cascade and Sandy Ridge Dairy in Ionia. Meyer is working on a dairy research project with Dr. Mike Vandelaar, and also working for the Michigan Department of Agriculture and Rural Development Drain Commission as a student assistant. She is very involved with 4-H and FFA, and is currently serving as the 2016-17 Michigan FFA Region 5 State Vice President. After graduating in 2020, Meyer plans to either attend vet school to become a large animal veterinarian, or pursue her interest in practicing agricultural law. She is involved in the MSU Dairy Club and competed on the Michigan 4-H Dairy Cattle Judging Team.

**MARGARET "MAISIE" SNYDER**, daughter of Jennifer and Robert Snyder, of Kalamazoo, is a sophomore at MSU studying food science. She works in the sensory science lab at MSU, helping a Ph.D. student with taste and odor perception research. Snyder was an intern at the Western Michigan University Developmental Biology Laboratory studying the mutations of zebrafish, as well as at Kalsec, Inc. as a flavor chemistry intern, researching spice extraction methods and making flavors. She is involved with the MSU Campus Orchestra and Food Science Club. After graduating, Snyder plans to pursue a career in the food science industry, focusing on dairy product development.

## Ag Tech Scholarships (\$2,000)

---

**SHELBY BERENS**, of Holland, completed the MSU Institute of Agricultural Technology Dairy Management Certificate program. She was an active member of FFA, where she served as the president of the Careerline Tech Center FFA Chapter and received her FFA State Degree. Berens was also very involved in 4-H, serving as club president, youth council representative, and teen leader, and participated at the state and national levels in dairy judging and quiz bowl. She has previously worked on J&D Brenner Farms, an 800-cow dairy, and as a stable hand at Circle K Morgans. Berens is planning to pursue a four-year degree in agricultural communications.

**DEVON ROSEBRUGH**, son of Tony and Rebeka Rosebrugh, of West Branch, is a second-year student in the MSU Institute of Agricultural Technology Agribusiness Management Program. He has previously worked as a part-time mechanical repair assistant with the T.R. Timber Company, and is currently a farmhand at Rosebrugh Dairy Farm. In high school, Rosebrugh was involved with the Ogemaw Heights FFA Chapter, National Honor Society, his county 4-H club, and various varsity sports teams. After graduating from college, he plans to own and manage an agricultural business.

**MASON HORNING**, son of Jeff and Lynda Horning, of Manchester, is in his second year in the MSU Institute of Agricultural Technology's Agricultural Industries program. He has previously volunteered for Breakfast on the Farm, Rural Education Days, and at University of Michigan basketball and football games. Horning has also worked at Weidmayer Farms in Ann Arbor, and is currently working on his family's dairy farm in Manchester. He is involved with the MSU Dairy Club, Collegiate Farm Bureau, Agronomy Club, and Alpha Gamma Rho Fraternity. After graduating, Horning plans to enter the agricultural industry and continue working on his family's dairy farm.

**MASON SMITH**, is the son of Brad Smith, and completed the MSU Institute of Agricultural Technology Dairy Management Certificate Program. He graduated from Homer High School, where he was active in National Honor Society, played varsity football, ran track and field, and served as class president. After his time at MSU, Smith plans to either work on his family dairy farm with his brother and expand their milking operation, or continue working for Pleasant View Dairy, where he is currently completing an internship.

**EVELYN OKKEMA**, daughter of Tjerk and Ramona Okkema, of Blanchard, completed the MSU Institute of Agricultural Technology Dairy Management Program. She has experience working at both Walnuthdale Farms in Wayland and De Grins Oer Dairy in Blanchard. Okkema has been involved with the Dairy Days at the Capitol, Mecosta County 4-H, and MSU Dairy Club, competed on the 4-H National Dairy Cattle Judging Team, and is serving as a Michigan Dairy Ambassador. She is planning to transfer to the four-year MSU Agribusiness Management program before returning to work on her family's dairy farm.

**ERICA DRAKE**, of Ann Arbor, completed the MSU Institute of Agricultural Technology Dairy Management Certificate Program. She was an active 4-H and FFA member, showed sheep, dairy feeders, and beef, and participated in dairy judging and dairy quiz bowl. Drake has also served as the president, vice president, and secretary of both the Saline FFA Chapter and her 4-H club. She has been employed by Dawn's White Horse Farm and Tractor Supply Company in Ann Arbor, and at Lafontaine Chrysler Dodge Jeep Ram in Saline. Drake is currently working at Drakelan Farms in Ann Arbor and the MSU Agronomy Farm, and interning at Breuninger Farms in Dexter. She was a member of the MSU Dairy Club, and aspires to become the owner and operator of the dairy farm where she grew up.

## MARK YOUR CALENDAR

### February 28, 2018

Deadline for scholarship applications  
(first-time and renewal applications for 4-year students)

### April 28, 2018

Annual meeting of MDMSF Board of Directors

*For application or more information about MDMSF Scholarships,  
visit [www.ans.msu.edu](http://www.ans.msu.edu) and click on the "students" link.*

## SCHOLARSHIP RECIPIENTS

The Michigan Dairy Memorial and Scholarship Foundation (MDMSF) awarded more than \$100,000 in scholarships to 34 Michigan State University (MSU) students pursuing dairy industry-related programs of study for the 2016-17 academic year.

The following 11 MSU students were awarded \$3,500 scholarships from the Michigan Dairy Memorial and Scholarship Foundation: Alycia Burch, Alyssa Gehring, Natalie Horning, Suzanna Hull, Torei Kulpinski, Jared Sanderson, Jack Luoma, Jorin Ouwinga, Emily Peacock, Ellen Launstein and Hailey Sharrard.

Six students pursuing a two-year certificate in the MSU Institute of Agricultural Technology (IAT) dairy management program each earned \$2,000 scholarships from the Michigan Dairy Memorial and Scholarship Foundation: Shelby Berens, Devon Rosebrugh, Mason Horning, Mason Smith, Evelyn Okkema and Erica Drake.

Five first-year students were awarded the Michigan Dairy Memorial and Scholarship Foundation Freshman Scholarships worth \$1,500: Leta Larsen, Allison Schafer, Austin Haywood, Madeline Meyer and Margaret Snyder.

The Michigan Dairy Memorial and Scholarship Foundation oversees the largest scholarship program in the MSU College of Agriculture and Natural Resources and one of the largest at MSU.



**MATTHEW KUHN**  
Redmond and Edna Cotter Endowed Scholarship

Matthew Kuhn of Schoolcraft, MI has been chosen as the 2016-17 recipient of the Redmond (“Red”) and Edna Cotter endowed scholarship through the Michigan Dairy Memorial and Scholarship Foundation Inc., at MSU. The \$4,000 scholarship is named in honor of Red Cotter, in inspirational dairy industry leader and respected motivator of sales and marketing executives, and his wife Edna.

Kuhn, the son of Ronald and Brenda Kuhn, received the award based on his academic achievements, involvement in extracurricular activities, and interest in pursuing a career in dairy cattle research. In addition to his enrollment at MSU, he was involved with the College of Agriculture and Natural Resources, where he graduated with a Bachelor of Science degree in animal science in May 2013. Kuhn graduated in May with a Doctoral degree in Veterinary Medicine, and plans to complete his doctoral degree in large animal clinical sciences in May 2020.

Kuhn worked as a graduate student in the Matilda R. Wilson Meadowbrook Laboratory, a Student Lab Assistant in the MSU Molecular Pathology Laboratory, a Quality Assurance Intern with Cargill Regional Beef in California, and a Livestock Discovery Intern with Pfizer Pharmaceuticals. Kuhn also completed a study abroad experience on Biology of the Galapagos Islands in 2011.

The Redmond (“Red”) and Edna Cotter endowed scholarship honors the Cotter couple and their many contributions to the dairy industry. A 1937 graduate of MSU, Mr. Cotter was employed for 43 years as a sales manager for Ralston-Purina, covering in Michigan, Ohio, and Indiana. Upon his retirement, he served as a guest lecturer in CANR. Edna Cotter’s MSU roots stem back to the beginning: she was born on a farm on what is now the MSU Hancock Turfgrass Research Center and she graduated from Michigan State College (MSC) in the 1930’s. She was a generous supporter of the Redmond and Edna Cotter Agribusiness Scholarship Fund, the MSU Intercollegiate Athletics Fund, and the Carrigan Chair for Feline Health in the MSU College of Veterinary Medicine.





**LAUREN KERBER**

**Harold and Lillian Gremel Endowed Scholarship**

Lauren Kerber, of Bangor, Mich., is the 2016-17 recipient of the Harold and Lillian Gremel endowed scholarship through the Michigan Dairy Memorial and Scholarship Foundation Inc., at MSU. The \$4,000 scholarship is named in honor of Harold, and in memory of Lillian, Gremel of Sebawaing. The scholarship is awarded annually to a student currently attending veterinary school at MSU who has completed the Production Animal Scholars Program in the Department of Animal Science.

Kerber, the daughter of Tom and April Kerber, has taken classes at MSU and Lake Michigan College. She has been active in both the College of Agriculture and Natural Resources and the College of Veterinary Medicine at MSU, where she graduated with a Bachelor of Science degree in animal science in December 2012. Kerber graduated in May with a doctoral degree in Veterinary Medicine.

Kerber completed multiple externships through the College of Veterinary Medicine, working with Carthage Veterinary Services in Carthage, Ill., Airport Animal Clinic in Cadillac, Green Meadows Farm in Elsie, and Meadowview Veterinary Services in Carson City. She also completed a summer Fellowship program with the Cleveland Equine Clinic in Cleveland, Ohio, where she handled and restrained horses, conducted physical examinations, administered medicine, obtained radiographs, practiced ultra-sounding limbs, and aided during medical procedures.

The Harold and Lillian Gremel endowed scholarship was established in 2007 by the Gremel family. Together during their 52 years of marriage, the Huron County dairy producers and lifetime industry supporters were past recipients of the West Huron Michigan Milk Producers Association (MMPA) Outstanding Lifetime Achievement Award, honored as the MMPA Outstanding Young Dairy Couple, and chosen as the MSU Dairy Farmer of the Year. Harold also served on the Michigan Dairy Memorial and Scholarship Foundation board of directors. The Gremel endowed scholarship was the first Michigan Dairy Memorial and Scholarship Foundation scholarship designed for veterinary students.



**ALLISON PUNG**

**John and Barbara Dilland Scholarship**

Allison Pung of Portland, Mich., was chosen as the 2016-17 recipient of the John and Barbara Dilland endowed scholarship through the Michigan Dairy Memorial and Scholarship Foundation, Inc. (MDMSF) at MSU. The \$4,000 scholarship is named in honor of John Dilland, former controller, director of finance, and general manager for the Michigan Milk Producers Association (MMPA), and his wife, Barbara. The award is presented to an MSU sophomore, junior, or senior student majoring in the field of agribusiness management.

Pung, the daughter of Alan and Robin Pung, was a member of the 2015 Collegiate Dairy Cattle Judging Team and the 2017 National Dairy Challenge team. Pung completed the Ag Tech Dairy Management program and an internship on a large dairy farm in California before graduating with a degree in AgriBusiness Management in May 2017. Following graduation, Pung accepted a position with GreenStone Farm Credit Services.

The John and Barbara Dilland endowed scholarship was established in 2010 by the MMPA upon John's retirement. He held the positions of controller, director of finance, and general manager over the course of his 35 years of service in leadership capacities on several national organizations including the National Council of Farmer Cooperatives, the National Milk Producers Federation and the Innovation Center for U.S. Dairy. In Michigan, he served on the board of directors for the Michigan FFA Foundation and the Michigan Dairy Memorial and Scholarship Foundation.



**ETHAN HAYWOOD**

**Russel Erickson Scholarship**

Ethan Haywood, of Hastings, Mich., was chosen at the 2016-17 recipient of the Russel Erickson Scholarship by the Michigan Dairy Memorial and Scholarship Foundation (MDMSF) at MSU. The \$5,500 scholarship is named after Russel Erickson, MSU professor emeritus in the Department of Animal Science, and is awarded to a student whose career aspirations include working on or with dairy farms.

Haywood, the son of Luke and Renee Haywood, is scheduled to graduate in spring 2018 with a Bachelor's of Science degree in Animal Science. Throughout high school and college, Haywood has served as the State Vice President of the Michigan FFA Association, MSU FarmHouse Fraternity Chapter President, MSU Dairy Club member, National FFA Association Committee Vice Chair and Delegate, Barry County 4-H Teen Superintendent, and Hastings High School Student Council Executive Secretary.

After graduating, Haywood plans to return to his family's dairy operation as a sixth-generation owner and manager.



**KELLY RATERINK**  
Glenn and Anne Lake Scholarship

Kelly Raterink of Zeeland, Mich., was chosen as the 2016-17 recipient of the Glenn and Anne Lake Scholarship. The scholarship is named after Michigan dairy farmers Glenn and Anne Lake and provides \$7,500 in scholarship money divided over two semesters. Glenn Lake served as president of the National Milk Producers Federation and provided leadership in creating the Great Lakes Milk Marketing Federation, which helped dairy farmers secure bargaining rights to market their milk.

Raterink, the daughter of Dennis and Brenda Raterink, graduated with a degree in Animal Science in May 2017. Throughout high school and college, Raterink has served as the President and Treasurer of the MSU Dairy Club, Vice President of the Sigma Alpha Professional Agricultural Sorority, Co-chair for the Spartan Spectacular Calf Sale, Treasurer of the Michigan Junior Holstein Association, and was a Michigan Junior Dairy Ambassador. Raterink competed in the MSU Dairy Challenge and on the MSU collegiate and 4-H dairy cattle judging teams.



**MARIN WESTERN**  
Donald and Valera Murray Scholarship

Marin Western, of Croswell, Mich., was chosen at the 2016-17 Donald and Valera Murray endowed scholarship through the Michigan Dairy Memorial and Scholarship Foundation Inc., at MSU. The \$4,500 scholarship is named in honor of Donald Murray, a former MSU Extension dairy specialist, and his wife Valera.

Western, the daughter of Ken and Julie Western, interned at Vita Plus in Madison, Wisc., and served as President of the MSU Dairy Club during her senior year. Western graduated in May 2017 with a degree in animal science and a minor in agribusiness management. She plans to pursue graduate school in the MSU ANS Department.

Throughout college, Western was involved in the MSU Dairy Club, the MSU Dairy Challenge and Dairy Challenge Academy, MSU RISE (Residential Initiative of the Study of the Environment), and the Greening of Detroit project. She was also an AYSO Soccer Referee and a volunteer at the MSU Student Organic Farm.

The Donald and Valera Murray Endowed Scholarship was created in 2007 to recognize Dr. Murray's leadership role in establishing the Michigan Dairy Memorial and Scholarship Foundation. He guided the Foundation and served as its secretary from its beginnings in 1957 until he retired in 1972. The first Murray Endowed Scholarship was awarded in 2008.



**EMMALEE BLOUGH**  
Nick Bellows Scholarship

Emmalee Blough, of Lowell, was chosen at the 2016-17 recipient of the Nick Bellows Scholarship from the Michigan Dairy Memorial and Scholarship Foundation Inc., at MSU. The \$4,000 scholarship is named in honor of Nick Bellows, the former chief executive officer of the United Dairy Industry of Michigan (UDIM). This award is presented to an MSU student with a career interest in dairy promotions.

Blough is the daughter of Gary and Laurie Blough. She received the scholarship based on her academic achievements, involvement in extracurricular activities, and interest in pursuing a career in the dairy industry. Blough graduated with a degree in food science in May 2017.

During college, Blough served as the State Reporter for the Michigan FFA Association and continues to work closely with the association by editing its Creed magazine and assisting with the annual State FFA Convention. She has also participated in 4-H, the Institute of Food Technologists, Campus Crusade for Christ, Bridges Language Partner Program, Agriculture Future of America (AFA) Food Institute, and the Kent County Fair.

Blough plans to pursue a career in quality assurance at a dairy processing company.

The Nick Bellows Scholarship was established in 2011 by the UDIM board of directors and staff members to recognize Bellows for his two and a half decades of commitment and dedication as the organization's CEO.



**RACHEL EKKEL**  
Velmar Green Endowed Scholarship

Rachel Ekkel of Fremont, MI is the 2016-17 recipient of the Velmar Green Scholarship through the Michigan Dairy Memorial and Scholarship Foundation Inc., at Michigan State University (MSU). The \$3,500 scholarship is named in honor of innovative dairy leader, C. Velmar Green of Elsie, MI. The scholarship is awarded to a second-year student in the MSU Institute of Agricultural Technology dairy management certificate program.

Ekkel, the daughter of Doug and Shelly Ekkel, has worked at Ekkel Dairy Farm and Brookvista Dairy Farm in Fremont. She completed an internship at Fern-Jo Farms in Tulare, Calif. While at MSU, Ekkel was a member of the Ag Tech dairy cattle judging team and took home first place honors at both the Harrisburg and Madison contests. She was selected as the Outstanding Graduating Ag Tech dairy student. Upon graduation, Ekkel returned to help operate her family's dairy farm with her brother and parents.

The Velmar Green scholarship was established in 2009 by the Michigan Milk Producers Association (MMPA) to recognize Green for his 40 years of service to the MMPA board of directors. Green is the owner of Green Meadow Dairy Farms, Inc., one of the largest herds of registered Holsteins in North America and home to an on-site teaching laboratory for MSU College of Veterinary Medicine students. He has held leadership positions with milk marketing groups, breed associations, the Dairy Herd Improvement Association (DHIA), the Michigan Cattlemen's Association, university advisory groups and agriculture lending organizations. Green was the 2012-13 chairperson of the Michigan Commission of Agriculture and recognized by the World Dairy Expo as the Dairyman of the Year in 2013.

---

## JACK AND BETTY BARNES SCHOLARSHIP

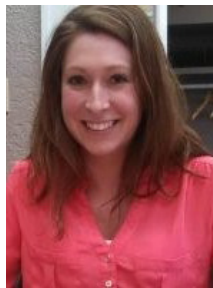
Three MSU students have been awarded the Jack and Betty Barnes Scholarship from the Michigan Dairy Memorial and Scholarship Foundation for the 2016-17 academic year. Kelly Raterink, from Zeeland, Brooke Densmore Tate, from Owosso, and Jared Sanderson from Sandusky, each received a \$1,000 scholarship earmarked towards completing an international study experience.

The scholarship is named after the late Jack and Betty Barnes. Jack Barnes was employed with the Michigan Milk Producers Association (MMPA) for 39 years and served 26 of those years as general manager.



**KELLY RATERINK,** the daughter of Dennis and Brenda Raterink attended the Dairy Husbandry and Environmental Stewardship summer study abroad in Belgium, Germany,

and the Netherlands. Raterink has held employment with the MSU Molecular Reproductive Endocrinology Laboratory, Michigan Department of Agriculture, Raterink Dairy Farm, and Ba Ba Acres Club Lambs. While at MSU, she was involved with the MSU Collegiate Dairy Cattle Judging team, Sigma Alpha Professional Sorority, Spartan Spectacular Calf Sale, MSU Dairy Club, Production Animal Scholars, Michigan Dairy Junior Ambassador, Michigan Junior Holstein Association, and the MSU 4-H Dairy Cattle Judging team. Upon graduation, Raterink assumed a position with Northstar Cooperative in Indiana.



**BROOKE (DENSMORE) TATE,** also attended the Dairy Husbandry and Environmental Stewardship program. Tate has worked for Geyer Farm Services and

Dr. BethAnn Faber, DDS. She was also involved with the Livingston County 4-H Showmanship Sweepstakes, County Line Rebels 4-H Club, Large Animal Market Livestock Committee, Livingston County Agricultural Society, Young Farmers Farm Bureau, Master of Beef Advocacy, and is certified as a Weighmaster. Tate has graduated and intends to pursue graduate school in the MSU ANS Department.



**JARED SANDERSON,** the son of Michael and Pattie Sanderson, also attended the Dairy Husbandry and Environmental Stewardship program in Belgium, Germany, and the Netherlands.

Sanderson worked as a farm hand at Welter Dairy Farm in Crosswell. He also held leadership positions with the Boy Scouts as a Senior Patrol Leader and Food 4 Friends as one of the original founders and coordinators. While at MSU, he was a member of the MSU Dairy Club and MSU Block and Bridle Club, and was also involved with Sanilac County 4-H and the National Honor Society. After graduating in May 2019, Sanderson plans to become a veterinarian, specializing in dairy cattle and other production species.

## Department Summary - October 2017

The Department of Animal Science saw a number of exciting changes in 2017. Leadership change headlined the news with the naming of a new department chair: Pamela Ruegg, DVM, MPVM, will take on her new role in 2018. Ruegg is a professor and Extension milk quality specialist in the Department of Dairy Science at the University of Wisconsin–Madison. She received her undergraduate degree and Doctor of Veterinary Medicine from MSU.

The department added four faculty and one staff member recruited as part of the MSU Global Impact Initiative. Joining ANS are Cedric Gondro, Professor; Yuan Wang, Assistant Professor; Wen Huang, Assistant Professor; Aritro Sen, Assistant Professor; and Anindita Biswas, Research Assistant. Autumn semester brought additional new faculty, including Tasia Taxis, Assistant Professor; Roger Thomson, Professional Aide; Chastin Leggett, Specialist; Arnulfo Pineda Baird, Research Associate; and Pabitra Pal, Research Associate. New staff members included Cort Thompson, Research Assistant; Trent Cole, Lab Ag I; and Paige Bittner, Assistant Instructor. In addition, six graduate students joined ANS.

In other personnel news, Andrea Meade is the new manager of the Dairy Cattle Teaching and Research Center. Andrea was an MSU Animal Science dairy student and worked in different capacities at the dairy farm since 2013. She was a member of the Dairy Challenge Team, the Intercollegiate Dairy Judging Team, Dairy Club, and Block & Bridle Club, and she participated in our study aboard program to The Netherlands. She also completed a summer internship with NorthStar Cooperative. Her most recent employment was with the Michigan Milk Producers Association (MMPA) as a field representative. In addition, Joe Grulke was hired as the operations supervisor for the dairy; previously he shared responsibilities between the dairy and the swine farms.

This year, Rob Tempelman was selected to receive the American Dairy Science Association J.L. Lush Award in Animal Breeding, and Lorraine Sordillo (split appointment between Animal Science and Large Animal Clinical Sciences) received the Zoetis Physiology Award at the ADSA annual meeting. Joe Domecq was chosen as the CANR Outstanding Academic Advisor of the Year at the spring CANR picnic.

Students participate in the many of the professional meetings that occur each year. At the ADSA annual meeting, two graduate students and two undergraduate students brought home first, second, or third placings for their oral or poster presentations. PhD student Jonas de Souza, advised by Dr. Adam Lock, was the global graduate student winner of the Alltech Young Scientist Competition. The project that he submitted his research on and then presented at the conference was funded by M-AAA.

The Dairy Farmer of the Year Award, presented by the Michigan State University Department of Animal Science, was awarded in February to Jim and Jack Winkel of McBain. “The award recognizes the recipients’ ongoing efforts of managing an outstanding dairy operation and the role they play in strengthening their surrounding communities and the industry as a whole.”

---

## Celebrate Dairy Leaders with the Gift that Keeps Giving

### Name an MDMSF Honoree

One of the ways the MDMSF grows its endowment fund is through the honoring of individuals for their distinguished service to Michigan’s dairy industry. More than 200 individuals have been named MDMSF Honorees since the foundation’s establishment over 50 years ago.

A gift of \$1,000 or more to the MDMSF provides permanent recognition and honors a dairy leader for their service and contributions to the dairy industry. Foundation honorees receive personal recognition from the foundation and their names are inscribed on a plaque in Anthony Hall at MSU and honoree biographies and photographs are kept in permanent records in the MSU Department of Animal Science. In addition, photographs of MDMSF Honorees are now on display at the MSU Pavilion.

The items needed for naming an MDMSF Honoree include: a \$1,000 contribution to the MDMSF, an 8 X 10 photo of the honoree and a one page biography on the honoree. Many times the presentation to an MDMSF Honoree is given at an industry or MDMSF event. At other times, an individual is honored posthumously for their service to the industry by making a presentation to the deceased honoree’s family.

By honoring individuals through the MDMSF, donors are not only recognizing individuals for their accomplishments in the industry, but they are also investing and providing support to future dairy leaders. As the foundation endowment grows, additional scholarships can be awarded. With the increasing cost of higher education, scholarships often make the critical difference in the lives of students, enabling them to achieve their dreams for the future.

Naming someone as a MDMSF Honoree is a fitting tribute for recognizing someone who has served this great industry of ours.

If you are interested in honoring someone through the MDMSF contact:

- Any MDMSF board member
- Dr. Miriam Weber Nielsen at 517-432-5443 or [mws@msu.edu](mailto:mw@msu.edu)
- CANR Development office at 517-355-0284

# MAKING DONATIONS OF APPRECIATED STOCKS OR MUTUAL FUNDS SAVES TAXES:

BY MATTHEW HATCH, CPA  
SENIOR ACCOUNTANT IN THE AUDIT AND TAX DEPARTMENT AT NIETZKE AND FAUPEL, P.C.

The IRS allows owners of appreciated stock to make qualified charitable donations of stock and take a charitable deduction for the stock's fair market value on the day it's given away. There are a number of potential tax advantages for individuals who make these donations:

1. Donating appreciated stock that was held for more than one year provide benefits for qualified individuals in many ways. If an individual is looking to make a cash donation to a designated charity but also owns stock that has appreciated in value over the years, they may want to consider donating the stock. When stock appreciates in value the individual realizes a gain on the amount over the cost they paid for the stock. This gain can be taxed if sold at either long term capital gain rates (if held for more than a year) at a maximum of 20% or short term capital gain rates (if held for less than a year) at the individual's effective tax rate which could be up to 39.6%. By donating the appreciated stock the individual will be able to avoid paying capital gains tax on the appreciated stock.
2. Donating appreciated stock also gives individuals extra time to pick a qualified charity to donate to. In most circumstances individuals have to make qualified cash donations by the end of the calendar year in order to take the deduction for that tax year. However, if the individual is interested in donating stock but is not sure what charity they want to donate to, they can transfer shares to a donor advised fund before the end of the calendar year. Individuals can seek the help of CPAs, banks or private wealth investors to help them pick the donor advised fund that best meets their needs. In doing so, the individual is able to take the charitable donation once the shares are given to the fund but has unlimited time to decide which charity to donate to. This gives the individual more time to pick a charity of their liking and allows the donation to potentially grow tax free based on investment preferences.
3. The donation of the appreciated stock will also help individuals reduce their adjusted gross income by the gain not reported and taxable income by the fair market value of the stock. The fair market value of appreciated stock if held for more than one year is deductible on Schedule A of Form 1040 and depending on the amount of itemized deductions along with the stock the taxpayer would be able to reduce their taxable income by more than the standard deduction. The standard deduction for a married couple filing a joint return for 2017 is \$12,700 and \$6,350 for filing separate. Ultimately, an individual could donate an amount greater than the standard deduction reducing their taxable income by the FMV of the stock along with avoiding the capital gains tax.
4. In order to make a stock donation individuals will need to draft a letter of instruction or letter of authorization to transfer the shares to charity and send it to their bank or brokerage firm. If making the donation from a mutual fund, it's good to note that most mutual funds have their own form to fill out. It's always best practice to complete these forms early to allow the transfer to take place before year end.

The tax rules regarding the donation of qualified appreciated stock have some very specific requirements so be sure to consult with your tax advisor before making a stock donation for the first time.

---

## FORMER MDMSF SCHOLARSHIP RECIPIENTS... *What are you doing now?*

The MDMSF is developing a list of the various occupations in which former scholarship recipients are now involved. Please help us update our scholarship recipient records by completing the form below and returning it to Dr. Miriam Weber Nielsen.

Name: \_\_\_\_\_

Address: \_\_\_\_\_

Home Phone (optional): \_\_\_\_\_

Email (optional): \_\_\_\_\_

Major(s): \_\_\_\_\_

Degree(s), year(s) graduated : \_\_\_\_\_

Current occupation (title or position, employer name and location): \_\_\_\_\_

Mail, fax or e-mail to Dr. Miriam Weber Nielsen at: Department of Animal Science, MSU, 2265 Anthony Hall, 474 S. Shaw Lane, East Lansing, MI 48824-1225 / Fax: 517-353-1699 or email: msw@msu.edu

## THANK YOU LETTERS

---

I want to sincerely thank you and express my appreciation for being selected for the Red and Edna Cotter Purina Michigan Dairy Memorial Scholarship. This scholarship will go a long way towards helping me offset the cost of veterinary school, and I cannot thank you enough for that support. I am thankful you took a chance to choose a non-traditional student, and I hope to use my experience and training in research to help not only farmers and animals in Michigan, but the industry across the country. Thank you again.

- *Matthew J. Kuhn*

I would like to sincerely thank you for awarding me the Harold and Lillian Gremel Michigan Dairy Memorial Endowed Scholarship this year. I am a fourth-year veterinary student graduating from MSU in May 2017. I am currently applying for jobs as a dairy production medicine veterinarian in Michigan and nearby states. Scholarships like this one truly make a difference for students wanting to go into the agriculture industry. The financial help is greatly appreciated, however, it is just as important to me knowing the dairy industry supports me and has confidence in me as a future dairy veterinarian. I hope I will live up to your expectations by being an asset to producers and by giving back to the Michigan Dairy Memorial Scholarship Foundation in the future.

- *Lauren Kerber*

To whom it may concern,

Thank you so much for selecting me as a recipient of one of the Ag Tech Michigan Dairy Memorial scholarships. It means so much to me, and it will greatly help out as I finish paying my tuition and begin paying back my student loans. I am honored to represent this scholarship foundation in the dairy community. Thank you so much!

- *Mason Smith*

I would like to extend great thanks for choosing me as a recipient of your scholarship. It is a greatly generous and highly appreciated gift that will help finance my future. With your generosity, I will now have more funds to go towards the many finances I will face in college, such as tuition, housing, books, and a great number of other things. I not only give thanks for what you are doing for me, but what you will do, and have done, for other students in the community. Like me, higher education would be much more difficult to attain, if not impossible, for many students in the community without the scholarships you give. Once again, I cannot put into words how appreciative I am, and hope to put it to good use by financing an education that will help me achieve success in my career.

- *Devon Rosebrugh*

Thank you for choosing me as a Michigan Dairy Memorial Scholarship recipient. This scholarship will greatly aid my college expenses in the Agribusiness Management program at Michigan State University. I am very honored by this award, and I appreciate the recognition by such honorable members of the dairy industry.

Thank you again!

- *Leta Larsen*

Thank you so much for awarding me the Barnes International Michigan Dairy Memorial Scholarship. I am very grateful. Because traveling overseas is so expensive, this contribution makes it possible for me to learn in the U.K, France, and Italy. I am so excited to see how this study abroad experience impacts my view of the world, as well as my education in food and dairy science. Thank you again.

- *Maisie Snyder*

Dear Board of Directors,

Thank you very much for this generous scholarship! Receiving this honor means a lot to me because I remember being a younger 4-H and FFA member and hearing the older kids that had gone off to college talk about the scholarships they had received from the memorial. I thought it was just the coolest thing that there were awesome folks in the dairy industry who had decided they needed to create scholarships designed specifically for us dairy kids here in Michigan. I'm very humbled to be one of those "older kids" now, and I hope that I can make you all proud in my endeavors here at MSU. I'm so proud to come from a farm and live in a state where the dairy industry is exceedingly progressive, and I look forward to being a contributing part of it in the future. Thank you again!

- *Madeline Meyer*

Your support as an organization and each as individuals for continued education in the agriculture and dairy industry is exceptional, and humbling. I am so honored and appreciative of receiving the John and Barbara Dilland Michigan Dairy Memorial Endowed Scholarship in AgriBusiness Management for my fifth and final year of college.

The money will be helpful as I prepare to start paying off student loans, living on my own, and building a career. What means the most, though, is your care. The time and effort you all put in to help young adults like myself acquire an education and experience as they assimilate into their respective fields is something that does not go unnoticed. It is your optimism for the future and unsaid trust that the recipients of these scholarships, including myself, will do prodigious things to help feed the world, and that positively reinforces that belief in me, too. Thank you so much.

- *Allison Pung*

Thank you for awarding me the Glenn and Ann Lake Michigan Dairy Memorial Scholarship for the 2016-17 academic year! It's truly an honor to receive this scholarship. I can't thank the Michigan Dairy Memorial and Scholarship Foundation enough for all the financial support they have given me during my time at Michigan State! They made my education possible, and I'm very grateful for that! It's great to see an organization so willing to invest in the next generation of dairy industry leaders!

-Kelly Raterink

I'm honored to have received one of the Michigan Dairy Memorial Scholarships for the 2016-17 school year. Thank you so much for this opportunity; I truly appreciate it! I will be starting my senior year this fall studying Agriculture, Food, and Natural Resources Education. In the fall of 2017, I will begin my year of student teaching along with the classes I must take simultaneously. This scholarship will help so much as I continue to pursue my dream of becoming an ag teacher. I hope that a few years from now, I will be able to begin teaching my own agriscience program at a high school in order to share my knowledge and passion for the agricultural community to future generations. Thank you so much!

- Natalie Horning

I offer my genuine thanks to the Board of Directors of the Michigan Dairy Memorial and Scholarship Foundation for your time and for all of the work that goes into making these scholarships possible for students. My sincerest appreciation also goes to the family of Archie Studer for continuing to offer this generous scholarship to MSU students. This scholarship will help me finish my final year in the animal science program. I have gotten such an incredible education at Michigan State University that I will be well prepared to eventually be a third-generation owner of my family's dairy farm where we will always raise the green and white banner. My simple final thank you attempts to convey more than I could ever put into words.

- Stephanie Weil

Thank you for selecting me as a recipient of the 2016-17 Michigan Dairy Memorial Scholarship. With the help of this scholarship, I am that much closer to being able to achieve my dreams and goals. I believe I speak for all awarded the scholarship when I say the amount of support we receive from the foundation year after year is phenomenal. I am honored to be awarded the scholarship and couldn't be any more thankful. Again, thank you.

- Alyssa Gehring

It is an honor to have received the Russel Erickson Michigan Dairy Memorial Endowed Scholarship for the 2016-17 academic year. I appreciate the tremendous support offered by the dairy industry, and I am extremely proud to associate myself with those in this profession. As a sixth-generation dairyman, I have grown up in the dairy industry learning the value of hard work, and I am very grateful for all of the opportunities that I have been given. As a third-generation Spartan through the MSU dairy program, I am extremely grateful for the opportunity to receive a high-quality education, and I am excited to continue applying my education to our operation. Thank you to the Michigan Dairy Memorial & Scholarship Foundation and all of the generous donors who have assisted me and many other students in obtaining an education, and reaching our goals in the dairy industry. Thank you for all of your support!

- Ethan Haywood

## WHAT ARE THEY DOING NOW?

### **Beth Rupprecht, Vassar, Mich.**

Degree(s): Bachelor of Science degree in Animal Science, 2011 (MSU); Bachelor of Science degree in Agribusiness Management, 2011 (MSU); Master of Entrepreneurship degree from Oklahoma State University (in progress)

Current Occupation: Regional Representative for Michigan Farm Bureau covering the Thumb of Michigan

### **Drew Rupprecht, Vassar, Mich.**

Degree(s): Bachelor of Science degree in Agribusiness Management, 2010 (MSU)

Current Occupation: Owner/Operator of Thistle Dew Dairy

*At the end of July 2016, Drew and his wife Beth started their family dairy operation back up. They currently milk 40 registered Jerseys, Holsteins, and a Milking Shorthorn in the family's original tie stall barn.*

### **Lisa (Lee) Lipsey, Potterville, Mich.**

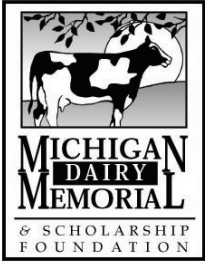
Degree(s): Bachelor of Science degree in Dairy Science, 1979 (MSU)

Current occupation: Departmental Analyst, Food and Dairy Division, Michigan Department of Agriculture and Rural Development

### **Jason Fligger, Detroit, Mich.**

Degree(s): Bachelor of Science degree in Animal Science, 1991 (MSU); Master's degree, 1994 (Purdue); Ph.D., 1998 (Purdue); Master's degree in Architecture, March 2010

Current occupation: Licensed Architect

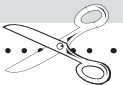


**Michigan Dairy Memorial and Scholarship Foundation**

Michigan State University  
Anthony Hall, Room 2265  
474 S Shaw Ln  
East Lansing MI 48824

Non-Profit Org.  
U.S. Postage  
PAID  
East Lansing, MI  
Permit No. 21

Please make checks payable to Michigan State University, designate for MDMSF and forward with this completed form to:  
  
Dr. Miriam Weber Nielsen  
Michigan Dairy Memorial and Scholarship Foundation  
Department of Animal Science, Michigan State University  
Anthony Hall, Room 2265  
474 S Shaw Ln  
East Lansing MI 48824



**Contributions to MDMSF (A10901)**

Appeal Code 01034

Enclosed is my total contribution of \$\_\_\_\_\_ OR

Enclosed is my initial contribution of \$\_\_\_\_\_

Please send me pledge reminders:

\_\_\_\_\_ annually                      \_\_\_\_\_ semi-annually                      \_\_\_\_\_ quarterly

Name: \_\_\_\_\_

Address: \_\_\_\_\_

Home Phone: \_\_\_\_\_ Email: \_\_\_\_\_

*Please Send Me More Information on:*

- A personal visit or other assistance*     *MDMSF Honoree Recognition*
- Joining MSU donor recognition clubs*

